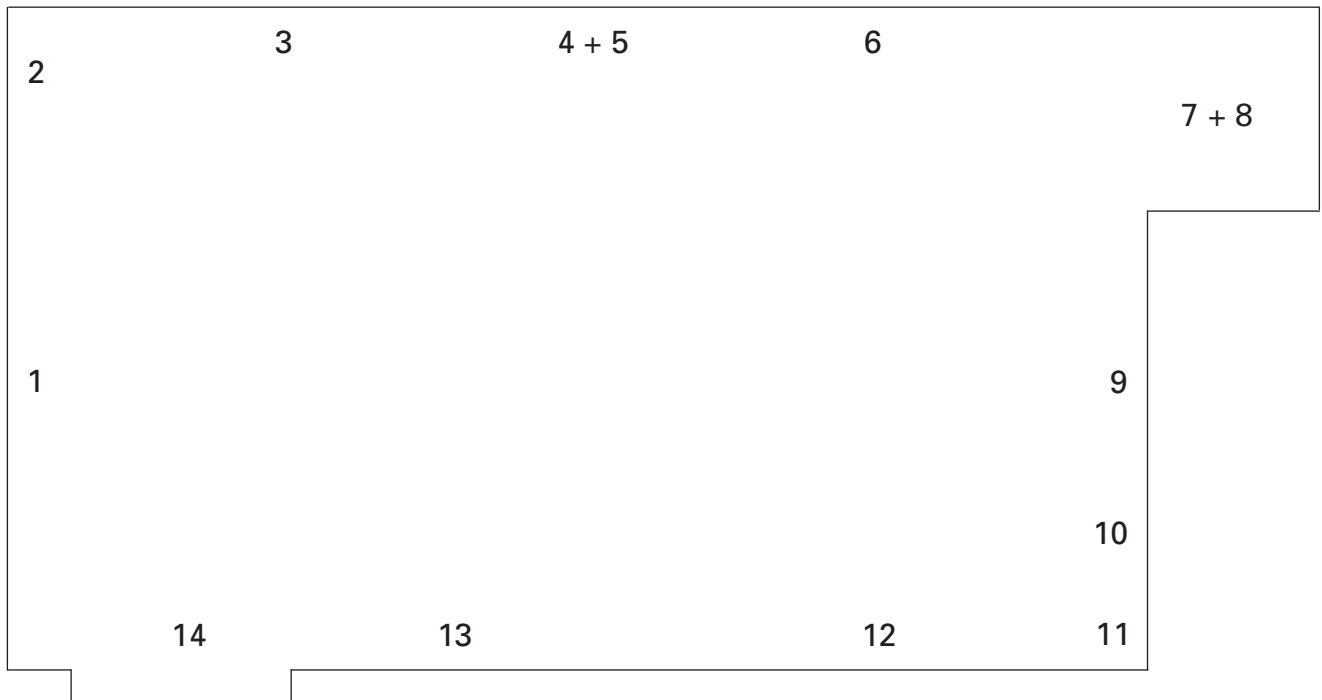


Timecode

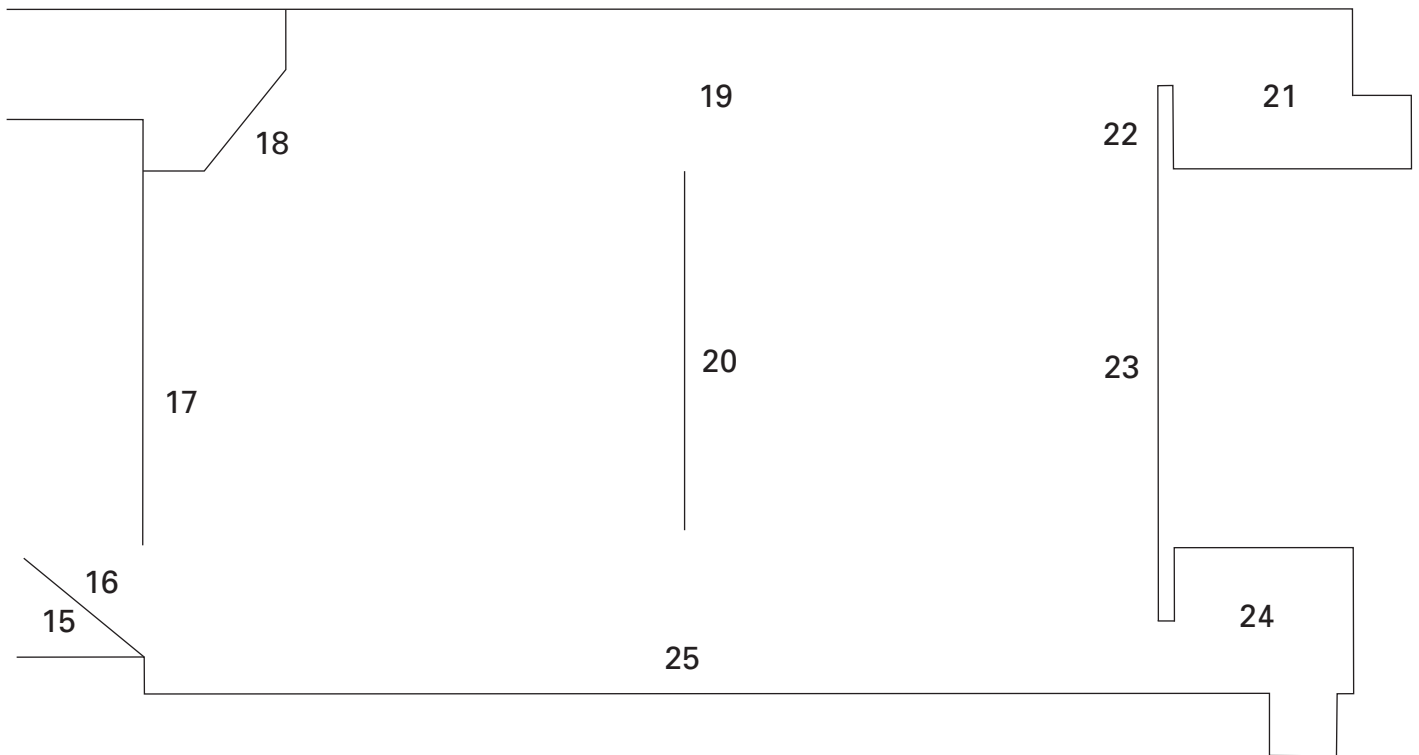
GALLERY 1



- | | |
|---|---|
| <p>1 Ross Birrell
<i>The Unexpected: Saccade</i>, 2001/2009
Graphite on Wall,
Dimensions variable
Courtesy of the artist and Ellen de Bruijne Projects,
Amsterdam</p> <p>2 Douglas Gordon
<i>Instruction (Number 4)</i>, 1993
<i>It's only just begun.</i>
Telephone call and wall text in Bembo typeface,
matt blue,
Dimensions variable
Courtesy of the artist and Gagosian Gallery</p> <p>3 Ugo Rondinone
<i>13 September 2008</i>, 2008
Acrylic on canvas, 310 x 250cm
Courtesy of the artist and Galerie Eva Presenhuber,
Zurich</p> <p>4+5 Ilana Halperin
<i>Physical Geology</i> (model for cave cast), 2008
Resin, wooden case, booklet,
17.8 x 22.8 x 3cm
Courtesy of the artist and doggerfisher,
Edinburgh</p> <p>6 Graham Dolphin
<i>One Month (The Times)</i>, 2009
Carbon on paper, 42 x 59cm
Courtesy of the artist and SEVENTEEN</p> <p>7 On Kawara
<i>One Million Years</i>, 2000
Audio CDs
74 minutes and 47 minutes
Courtesy of Musée d'Art Moderne de la Ville de Paris</p> | <p>8 On Kawara
<i>Codes</i>, 1996
Bookwork, 35 x 26 x 7cm
Courtesy of Yvon Lambert Gallery, Paris</p> <p>9 Christian Stock
<i>Quicksilver</i>, 2009
Watercolour on wall, Dimensions variable
Courtesy of the artist</p> <p>10 Christian Stock
<i>Black Cube Painting</i>, 1999 - 2004
Acrylic on canvas, 15 x 15 x 15cm
Courtesy of Clara and Gunther Gurtler Mayrhofen, Tirol</p> <p>11 Christian Stock
<i>White Cube Painting</i>, 1985 - 1989
Acrylic on canvas, 18 x 18 x 18cm
Courtesy of the artist</p> <p>12 Christian Stock
<i>Blue Cube Painting</i>, 1983 - 1985
Acrylic on canvas, 15 x 15 x 15cm
Courtesy of the artist</p> <p>13 Ross Birrell
<i>Rough Diamond</i>, 1997/2009
Lump of coal insured for price of 1 carat cut diamond
at Hiscox, London.
Courtesy of the artist & Ellen de Bruijne Projects, Amsterdam</p> <p>14 Douglas Gordon
<i>Letter (Number 10c)</i>, 1993
<i>From the moment you read these words, until you
meet someone with brown eyes.</i>
Letter and wall text in Bembo typeface, matt brown
Dimensions variable
Courtesy of the artist and Gagosian Gallery</p> |
|---|---|

Timecode

GALLERY 2



- | | |
|---|--|
| <p>15 Douglas Gordon
<i>Letter (Number 10a)</i>, 1993
<i>From the moment you read these words, until you meet someone with blue eyes.</i>
Letter and wall text in Bembo typeface, matt blue
Dimensions variable
Courtesy of the artist and Gagosian Gallery</p> | <p>20 David Lamelas
<i>Time</i>, 1970/2009
Instructions for performance</p> |
| <p>16 Douglas Gordon
<i>Letter (Number 10b)</i>, 1993
<i>From the moment you read these words, until you meet someone with green eyes.</i>
Letter and wall text in Bembo typeface, matt green
Dimensions variable
Courtesy of the artist and Gagosian Gallery</p> | <p>21 Kelly Mark
<i>I really should...</i>, 2002
Audio CD, 45 minutes
Courtesy of the artist</p> |
| <p>17 Thomson & Craighead
<i>Beacon</i>, 2007
Networked railway flap sign, 34 x 264 x 20cm
Courtesy of the artists and Eddie Berg</p> | <p>22 Kelly Mark
<i>33 Minute Stare</i>, 1996
DVD 33 minutes, colour, silent
Courtesy of the artist</p> |
| <p>18 Thomson & Craighead
<i>Horizon</i>, 2009
Material, 34 x 264 x 20cm
Courtesy of the artists and Eddie Berg</p> | <p>23 Ceal Floyer
<i>1 to 25 (English Version)</i>, 2003
DVD, 5 minutes
Courtesy of the artist and the Lisson Gallery, London</p> |
| <p>19 Tatsuo Miyajima
<i>Counter Void S-1</i>, 2003
Neon, plastic, stainless steel, IC controller
231.6 x 167.1 x 60cm
Courtesy of the Lisson Gallery, London</p> | <p>24 Douglas Gordon
<i>Something between my mouth and your ear</i>, 1994
Yellow room, cd, amp, speakers and cable
Dimensions variable
Courtesy of the artist and Gagosian Gallery</p> |
| | <p>25 Graham Dolphin
<i>Miles and Miles</i>, 2008
Single channel dvd
4' 04" looped
Courtesy of the artist and SEVENTEEN</p> |