

This visual guide is designed to help you find your way around Dundee Contemporary Arts (DCA) and give you an idea of what you can find on each level of the building.

FRONT OF THE BUILDING

DCA is located at 152 Nethergate. You will enter through an automatic sliding door onto the ground floor.



BACK OF THE BUILDING

At the back of DCA you will find two pay and display car parks and a multi-storey car park. You can access the building using the lift (you will enter on floor -2), which can take you to any floor of the building, or the stairs which will take you to the lower ground floor.



GROUND FLOOR

On the ground floor you will find our Box Office, [DCA Shop](#), Information Space, [Create Space](#) and our [Galleries](#).

There are also toilets, an accessible toilet, baby changing facilities, a feeding room and a gender-neutral toilet.



DCA SHOP

In our shop you will find a range of items to browse and buy. You can also buy items [online](#).

Staff here can also help you with buying tickets, answer any questions you might have or help direct you around the building.



BOX OFFICE

You can buy cinema tickets, event tickets, workshop tickets, memberships and gift cards from the staff at our Box Office.

They can also help you with any questions you might have or help direct you around the building.



TOILETS

The toilets are in the glass circle just to the right of Box Office.

The accessible toilet, baby changing facilities, feeding room and gender-neutral toilet are located to the right of this before you get to our Information Space.



ACCESSIBLE TOILET AND PARENT AND BABY FACILITIES

The accessible unisex toilet has an emergency pull cord.

Beside this are the baby changing facilities, feeding room and gender-neutral toilet. Nappies and baby wipes are available in the baby changing area.



ADDITIONAL FACILITIES

Free period products are available from dispensers around the building. There is one located outside the accessible toilet on the ground floor, and others in the toilets on the lower ground floor.



QUIET SPACE

We have created a Quiet Space, where you can take time to pause. There is comfy seating and a calm environment for you to rest, take a deep breath and slow down for a while. It also contains resources on local support and community groups.

It has been designed in partnership with NHS Tayside.



INFORMATION SPACE

In this space you can find out more about our current exhibition and watch a video interview with the curator, Hettie Judah.

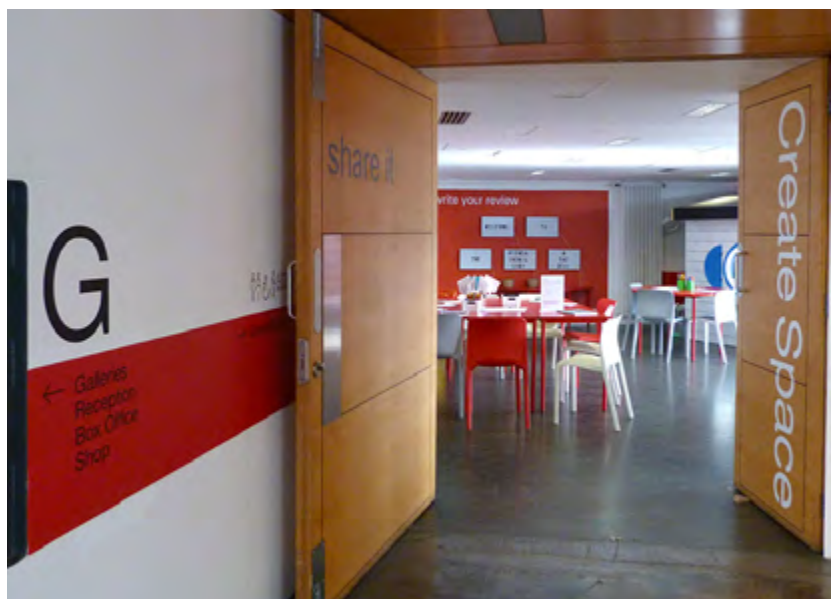
There are also copies of books from the exhibition reading list that you are welcome to browse and activities to try.



CREATE SPACE

Our Create Space has fun activity sheets to try and materials to use. Children under 12 should be accompanied by an adult at all times.

Sometimes Create Space is closed for a workshop. If this is the case, the door will be closed and there will be a sign to tell you.



GALLERIES

The layout of our galleries changes depending on the exhibition/s.

Until Sun 13 July 2025 you can see the group exhibition *Acts of Creation: On Art and Motherhood*. This exhibition is across Gallery 1 and Gallery 2 - please enter through the door to Gallery 2.



THE EXHIBITION

This exhibition features artworks that include nudity and explore childbirth, (in)fertility, miscarriage, abortion, loss and domestic abuse. Some of the films feature explicit language, nudity, racist language and graphic descriptions.

Please ask a Visitor Assistant if you require assistance.



CREATION

The exhibition explores different experiences of motherhood across four different spaces.

The first space is Creation, which looks at conception, pregnancy, birth and nursing.



MAINTENANCE

The second section is Maintenance, which is about the ongoing work of motherhood and caregiving. Here artists are engaged in domestic chores, keeping children safe, and navigating a balance between art and parenting.

It also includes a subsection called The Kitchen.



THE KITCHEN

The Kitchen contains archival material relating to feminist groups who were working between the 1970s and the 1980s.

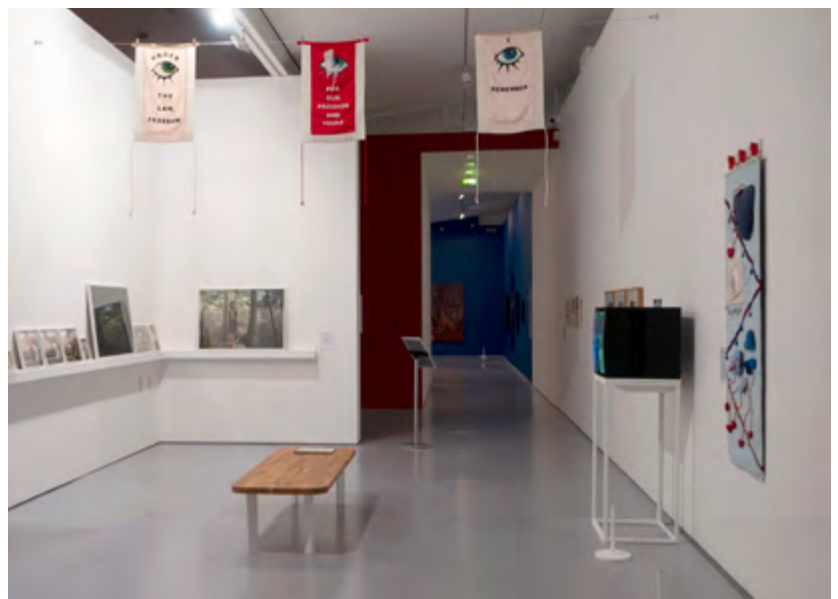
It also features a kitchen table that you are welcome to sit down at and take in some of the work that these groups were involved with.



LOSS

In Loss, artists reflect on experiences of miscarriage, adoption and involuntary childlessness.

Works in this section also protest the loss of women's reproductive rights.



THE TEMPLE

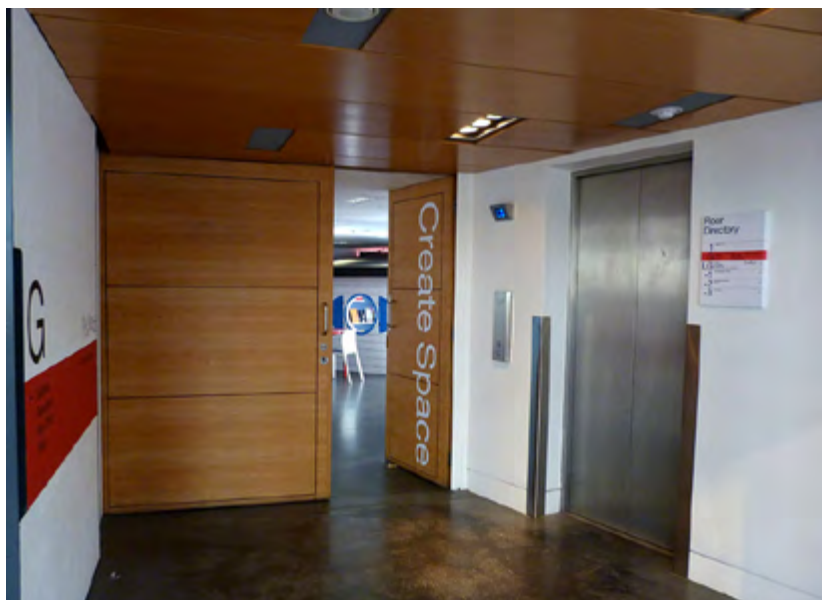
The Temple is a series of self-portraits in which artists explore their own identity in relation to motherhood.

For more information about any of the work on show, pick up one of our exhibition guides or speak to one of our Visitor Assistants.



LIFT

The lift is located beside the entrance to Create Space and can take you to the other levels of the building or out to the car park at the back of the building on -2.



STAIRS TO LOWER GROUND FLOOR

As you come in through the front entrance there are stairs leading down to the lower ground floor.

There is another set of stairs leading down to the lower ground floor, located outside of Gallery 2.



STAIRS TO FLOOR 1

There are stairs leading up to the Meeting Room on floor 1. These stairs are located inbetween Gallery 1 and Gallery 2.

Another set of stairs leads down to the lower ground floor.



LOWER GROUND FLOOR

On the lower ground floor you will find [Jute Café Bar](#), our [Cinemas](#) and our [Print Studio](#).

There are also toilets and an accessible toilet.



JUTE CAFE BAR

You can buy food and drinks from [Jute Café Bar](#).

Tables can be booked in advance [online](#) or by calling 01382 909 246 or you can check availability at the reception desk to the right of the bar.



CINEMAS

We have two cinemas located to the left of the bar.

Check our website to find out what's on. A Visitor Assistant will scan your ticket and can show you to your seat if required.



CINEMA 1

Cinema 1 has 198 seats and is the larger of the two cinemas.

Please sit in your allocated seat. Once the film is finished, please take any rubbish with you - this can be put in the bins in the cinema foyer. Reusable glasses can also be left here on the shelf.



CINEMA 2

Cinema 2 has 72 multicoloured seats.

Please sit in your allocated seat. Once the film is finished, please take any rubbish with you - this can be put in the bins in the cinema foyer. Reusable glasses can also be left here on the shelf.



TOILETS

The toilets are located just outside the cinemas through an automatic door. An accessible toilet is also available.

Free period products are available in these toilets.



ACCESSIBLE TOILET

This gender neutral toilet has an emergency pull cord and baby changing facilities.

Free period products are available in this toilet.



PRINT STUDIO

The Print Studio has lots of different equipment in it to create print, photography and digital work. Take a look at our Get Creative programme of workshops and courses.

Sessions for Registered Users should be booked in advance.



ACCESSIBLE TOILET

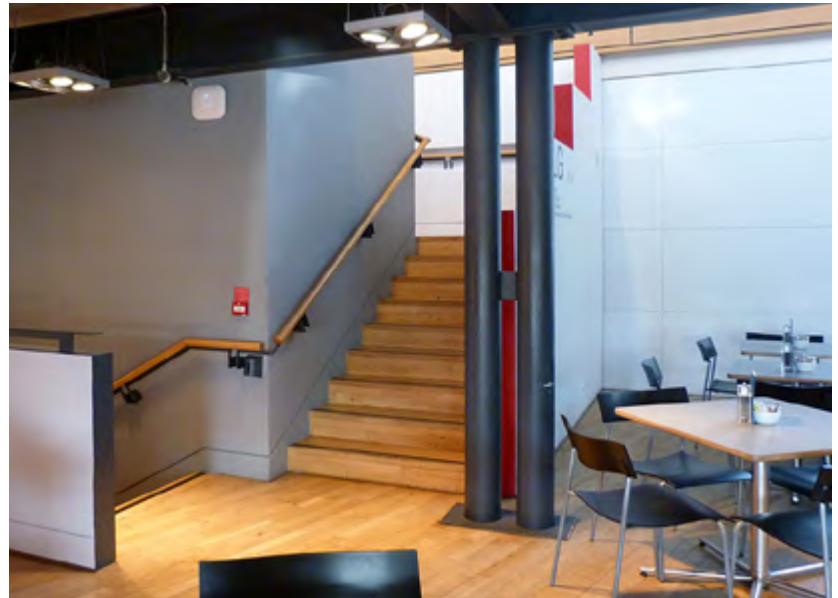
Inside the Print Studio there is a gender neutral accessible toilet. This is for those using the Print Studio or undertaking workshops and classes in this space.

Free period products are available in this toilet.



STAIRS

There are stairs leading down to -1 located outside the Print Studio and also stairs leading up to the ground floor.



LIFT

The lift is located to the right of the bar area.

This can take you to the other floors of the building or out to the car park at the back of the building on -2.



FLOOR 1

There is a meeting room located on floor 1.

This floor can be accessed by the lift or the stairs between the galleries. Please ask at Box Office if you are unsure of where to go.



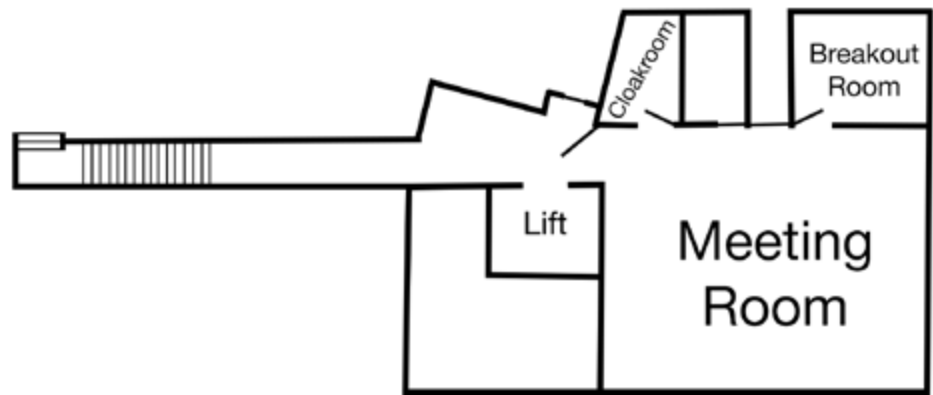
FLOORS -1, -2 AND -3

These floors are currently used for events and workshops. If you are attending any of these, a member of staff can show you where to go.

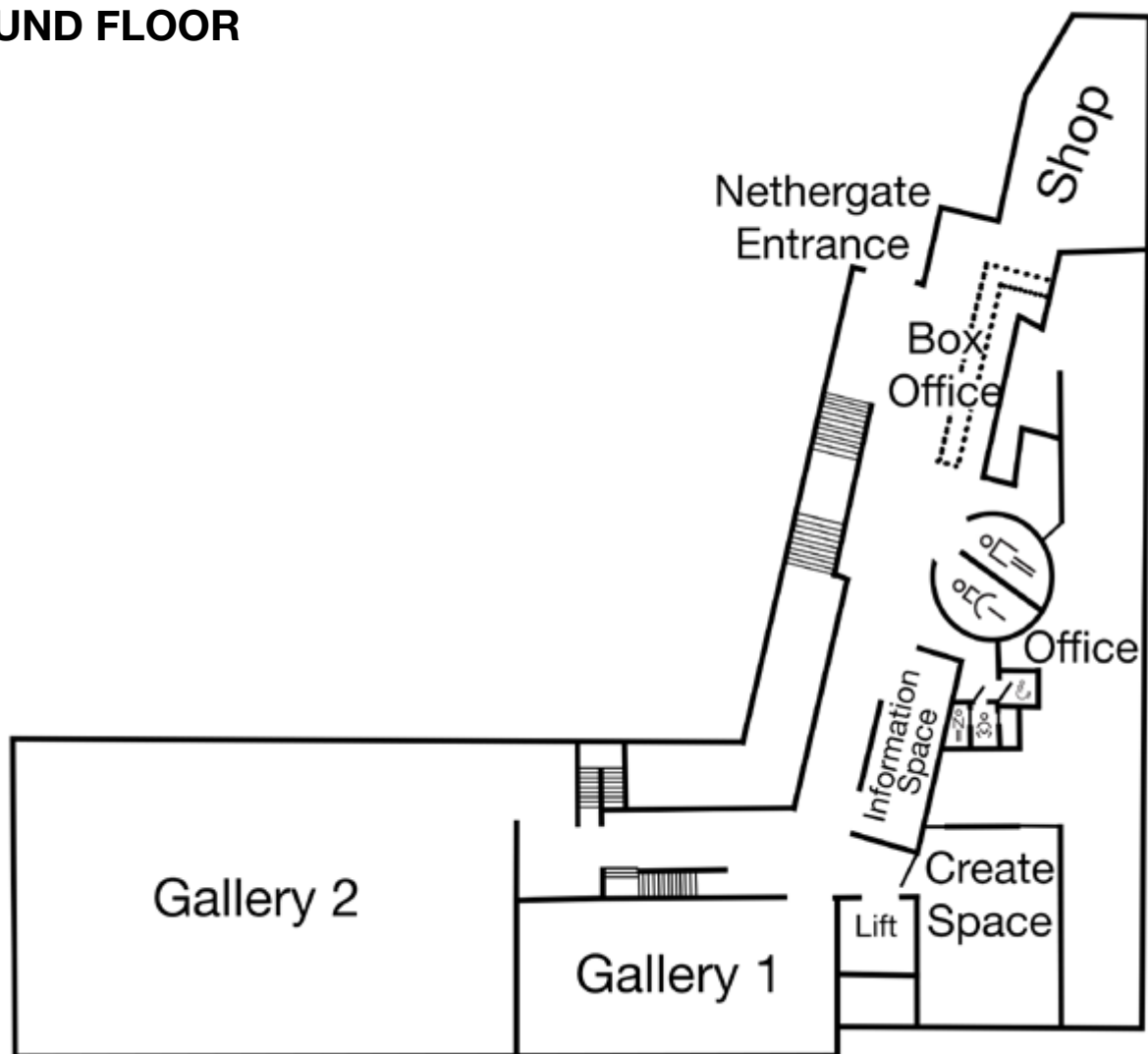


FLOOR PLAN

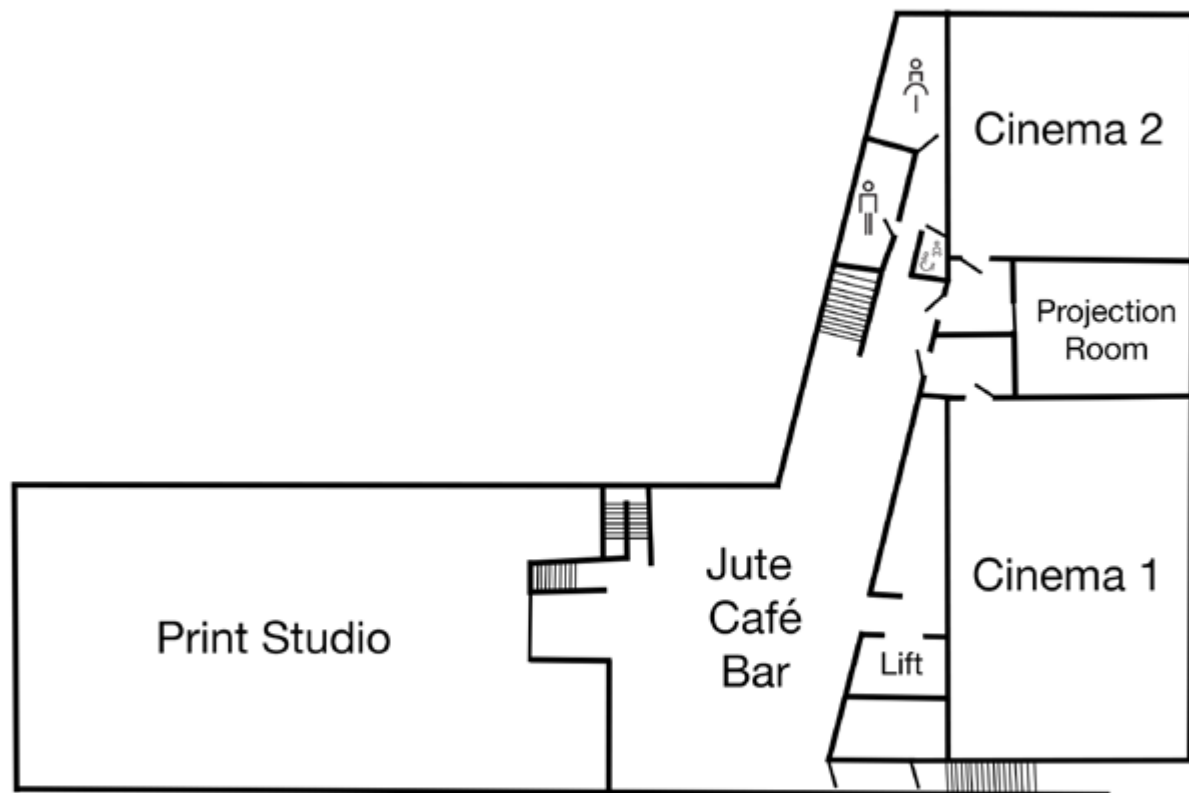
FLOOR 1



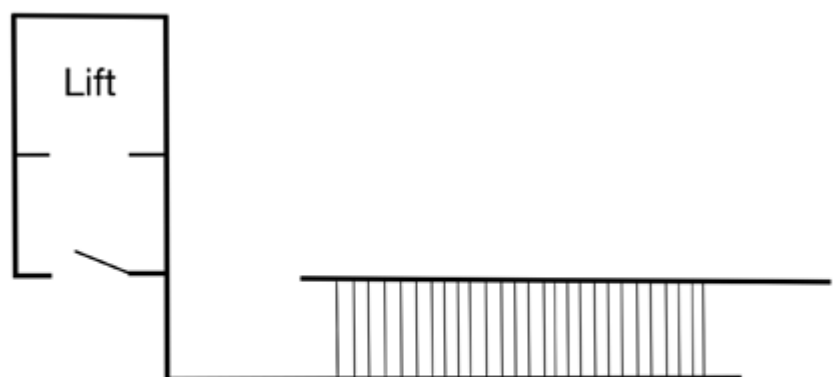
GROUND FLOOR



LOWER GROUND FLOOR



FLOOR -2



Car parks