

# Portrait of Dorothy Gale

## Easy Read Exhibition Guide



**DCA**  
Dundee Contemporary Arts



## What is in this Guide



Welcome to the exhibition.....page 2



How to explore the gallery.....page 3



What is the exhibition about?.....page 6



What you will see.....page 8



Thanks.....page 13

## Welcome to the Exhibition



This is an Easy Read guide for the exhibition **Portrait of Dorothy Gale** at DCA.



The artist is **Francis Dosoo**.



This guide tells you:

- What the exhibition is about
- What you will see



We hope you enjoy your visit!

## How to explore the gallery



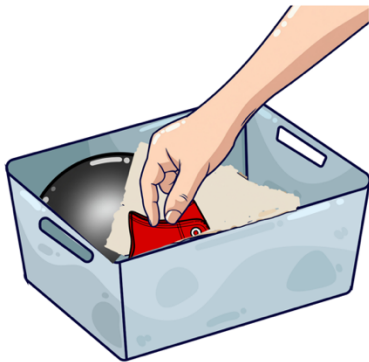
You are free to move around the gallery and look at the artworks in your own time.



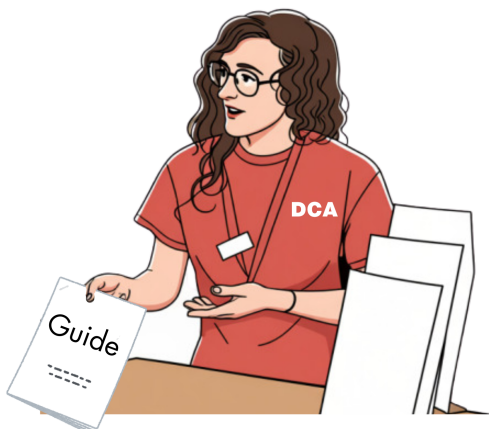
Please do not touch the artworks.



We have a handling box. It contains samples of the materials used in the artworks. You are allowed to touch and handle them



Ask a visitor assistant if you want to use the handling box.



Our visitor assistants wear red T-shirts. They are happy to talk to you about the artworks and the artist. You can also ask them questions.



You are welcome to make noise if you need to or want to.

We have sensory bags you can use during your visit.

These include:

- Ear defenders
- Sunglasses
- Magnifying glasses
- Stim toys
- And other helpful tools



You can find the sensory bags at the visitor assistant stand outside the gallery.

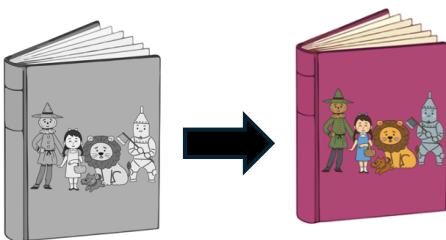
## What is the exhibition about?



The artwork is inspired by a film called **The Wiz** from 1978.



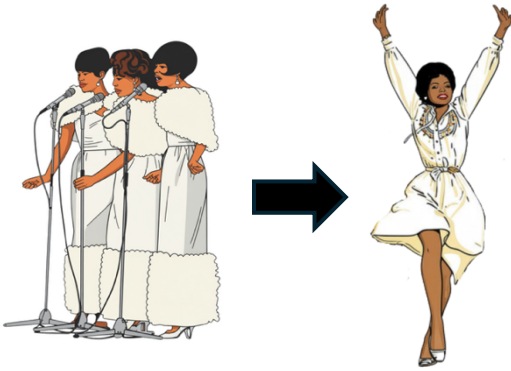
It is a **retelling** of the classic children's story **The Wizard of Oz**.



A **retelling** is a new version of an old story.



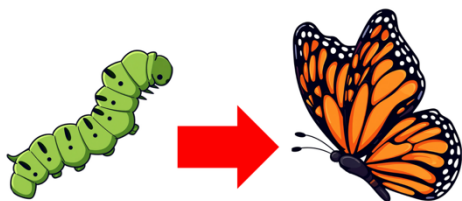
In the film **The Wiz**, the famous singer **Diana Ross** played the main character Dorothy.



The artist learned that **Diana Ross** was going through big changes in her own life while she made the film.



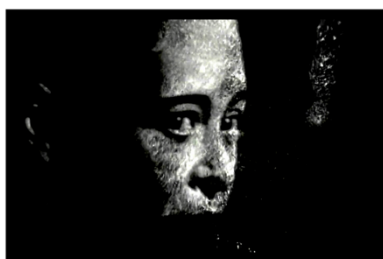
Diana felt a deep connection to Dorothy's journey in the story. She was also dreaming about discovering a new world.



The artist used this idea to think about:

- How people can change and grow in real life
- How films talk with pictures instead of words

## What You Will See



Francis has made a series of **films.**



The films are shown on televisions and projector screens. Francis wants you to think of the films as **one big film** that has been broken up into different parts.

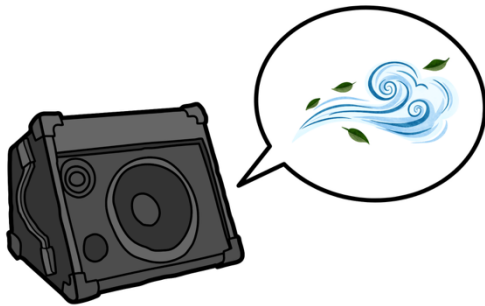


The artist uses clips from **The Wiz** and other films. He mixes them up and layers them on top of each other.



It shows images of people:

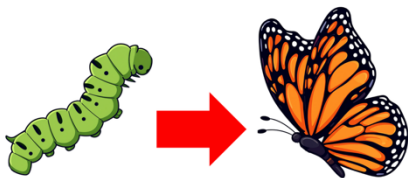
- going on a journey
- discovering new things
- changing who they are



Francis uses sounds and images of swirling snow. He hopes it will make you feel like you are standing inside a **storm**.



In **The Wizard of Oz**, there is a type of wind storm called a **tornado**. It lifts up Dorothy's house and transports her to another place.



Francis uses the storm as a symbol for change.



Francis wants the artwork to feel like a **dream**.



In **dreams** things don't always make sense.



The artwork helps us to think about things we cannot easily explain like dreams, feelings and how people change.



Thank you for coming. We  
hope you enjoy the  
exhibition!

## Thanks



Thank you to our **funders**. A funder is a person or organisation that gives money to help make the exhibition happen.



ALBA | CHRUTHACHAIL

The artwork **Portrait of Dorothy Gale** is supported by Creative Scotland's Open Fund for Individuals.

These are our other funders:



ALBA | CHRUTHACHAIL

## Other information



We have to tell you about who took one of the photos.



Mrs Lee took this photo of Francis in Seoul, Korea.

**DCA**  
Dundee Contemporary Arts

Dundee  
Contemporary Arts  
is Scottish Charity  
Number SCO26631.