

This visual guide is designed to help you find your way around Dundee Contemporary Arts (DCA) and give you an idea of what you can find on each level of the building.

FRONT OF THE BUILDING

DCA is located at 152 Nethergate. You will enter through an automatic sliding door onto the ground floor.



BACK OF THE BUILDING

At the back of DCA you will find two pay and display car parks and a multi-storey car park. You can access the building using the lift (please note that our passenger lift is currently closed for maintenance: please follow the signs to use our service lift), which can take you to any floor of the building (excluding floor 1), or the stairs which will take you to the lower ground floor.



GROUND FLOOR

On the ground floor you will find our Box Office, DCA Shop, Information Space, Create Space and our Galleries.

There are also toilets, an accessible toilet, baby changing facilities, a feeding room and a gender-neutral toilet.



DCA SHOP

In our shop you will find a range of items to browse and buy. You can also buy items online at shop.dca.org.uk.

Staff here can also help you with buying tickets, answer any questions you might have or help direct you around the building.



BOX OFFICE

You can buy cinema tickets, event tickets, workshop tickets, memberships and gift cards from the staff at our Box Office.

They can also help you with any questions you might have or help direct you around the building.



TOILETS

The toilets are in the glass circle just to the right of Box Office.

The accessible toilet, baby changing facilities, feeding room and gender-neutral toilet are located to the right of this before you get to our Information Space.



ACCESSIBLE TOILET AND PARENT AND BABY FACILITIES

The accessible unisex toilet has an emergency pull cord.

Beside this are the baby changing facilities, feeding room and gender-neutral toilet. Nappies and baby wipes are available in the baby changing area.



ADDITIONAL FACILITIES

Free period products are available from dispensers around the building. There is one located outside the accessible toilet on the ground floor, and others in the toilets on the lower ground floor.



EDITIONS SPACE

In our Editions Space you can see prints created by artists who have exhibited in our galleries over the years.

These are available to buy through DCA Shop and online. Every sale helps to support us to keep enriching people's lives through art, culture and creativity.



INFORMATION SPACE

In this space you can find out more about our current exhibition and watch video interviews with the artists exhibiting in DCA Galleries.

There are also copies of books from the exhibition reading list that you are welcome to browse and activities to try.



CREATE SPACE

Our Create Space has fun activity sheets to try and art materials to use. Children under 12 should be accompanied by an adult at all times.

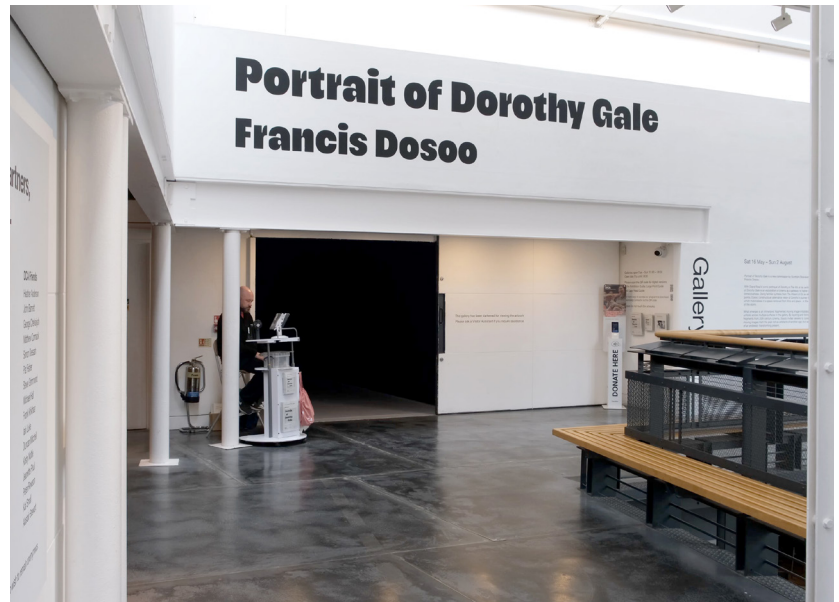
Sometimes Create Space is closed for a workshop. If this is the case, the door will be closed and there will be a sign to tell you.



GALLERIES

The layout of our galleries changes depending on the exhibition/s.

Until Sun 2 August 2026 you will find Francis Dosoo: *Portrait of Dorothy Gale* in Gallery 1 and Adrián Balseca: *In the Forest Ruins* in Gallery 2.



THE EXHIBITIONS

There are two exhibitions, one in each gallery. Both have an Exhibition Guide and Easy Read Guide. These are available at the gallery entrance and online.

A sensory bag and sensory box is also available - please ask a Visitor Assistant if you would like to use these.



GALLERY 1

In this space is an immersive video work by artist Francis Dosoo, inspired by *The Wizard of Oz* (1978). The space is **dark** - a Visitor Assistant can provide a torch if required.

There is a small TV and three large screens. There is a seat to sit on while you watch.



ENTRY TO GALLERY 2

You can enter Gallery 2 from the ground floor beside the service lift. There is no entry via Gallery 1.

The exhibition in Gallery 2 contains artworks made with **rubber** and **latex**. If you have any concerns, please speak to our Visitor Services team.



GALLERY 2

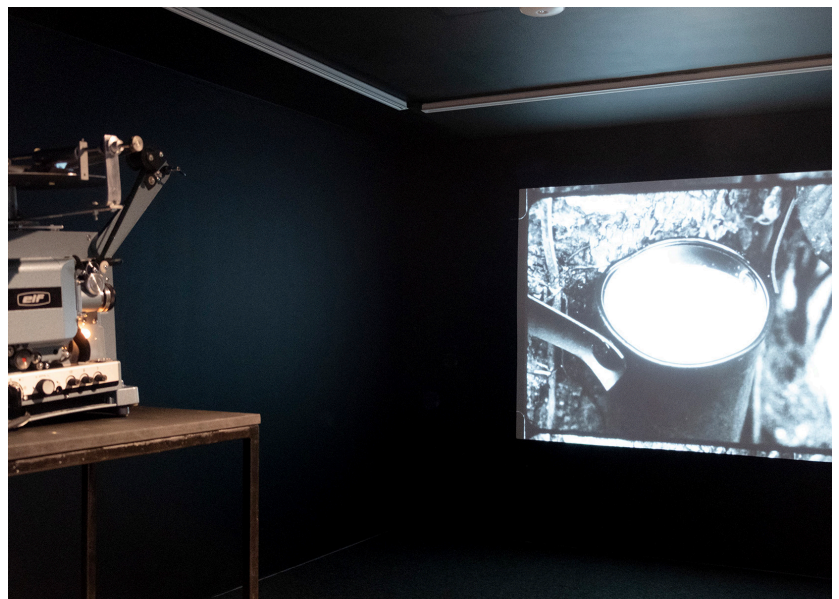
This large space features sculptures by Adrián Balseca. There is a giant inflatable Bibendum (Michelin's mascot), a garden of plants in a concrete planter and yellow printed cards hanging from the ceiling.

There are also benches that you can sit on.



BACK ROOM RIGHT

This room is darker and features a projector and film which is 9 minutes 30 seconds long.



BACK ROOM LEFT

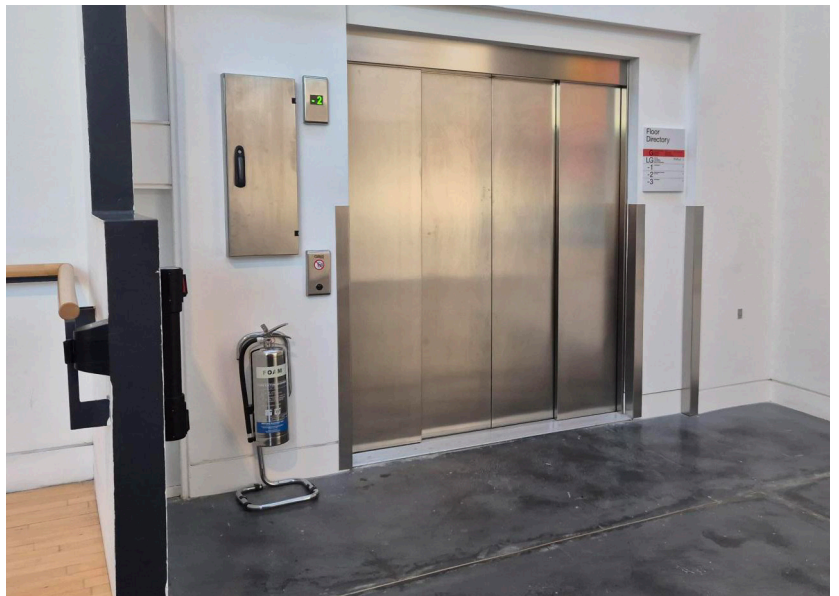
This small room features an artwork on the wall and research materials that the artist collected in a display table.



LIFT

Our passenger lift is currently closed for maintenance. Please use the service lift located between Gallery 1 and Gallery 2.

This can take you to the other floors of the building (excluding floor 1) or out to the car park at the back of the building on -2.



STAIRS TO LOWER GROUND FLOOR

As you come in through the front entrance there are stairs leading down to the lower ground floor.

There is another set of stairs leading down to the lower ground floor, located outside of Gallery 2.



STAIRS TO FLOOR 1

There are stairs leading up to the Meeting Room on floor 1. These stairs are located inbetween Gallery 1 and Gallery 2.

Another set of stairs leads down to the lower ground floor.



LOWER GROUND FLOOR

On the lower ground floor you will find Jute Café Bar, our Cinemas and our Print Studio.

There are also toilets and an accessible toilet.



JUTE CAFE BAR

You can buy food and drinks from Jute Café Bar.

Tables can be booked in advance online or by calling 01382 909 246 or you can check availability at the reception desk to the right of the bar.



CINEMAS

We have two cinemas located to the left of the bar.

Check our website (dca.org.uk) or ask at Box Office to find out what's on. A Visitor Assistant will scan your ticket and can show you to your seat if required.



CINEMA 1

Cinema 1 has 198 seats and is the larger of the two cinemas.

Please sit in your allocated seat. Once the film is finished, please take any rubbish with you - this can be put in the bins in the cinema foyer. Reusable glasses can also be left here on the shelf.



CINEMA 2

Cinema 2 has 72 multicoloured seats.

Please sit in your allocated seat. Once the film is finished, please take any rubbish with you - this can be put in the bins in the cinema foyer. Reusable glasses can also be left here on the shelf.



TOILETS

The toilets are located just outside the cinemas through an automatic door. An accessible toilet is also available.

Free period products are available in these toilets.



ACCESSIBLE TOILET

This gender neutral toilet has an emergency pull cord and baby changing facilities.

Free period products are available in this toilet.



PRINT STUDIO

The Print Studio has lots of different equipment in it to create print, photography and digital work. Take a look at our Get Creative programme of workshops and courses, available from Box Office.

Sessions for Registered Users should be booked in advance.



ACCESSIBLE TOILET

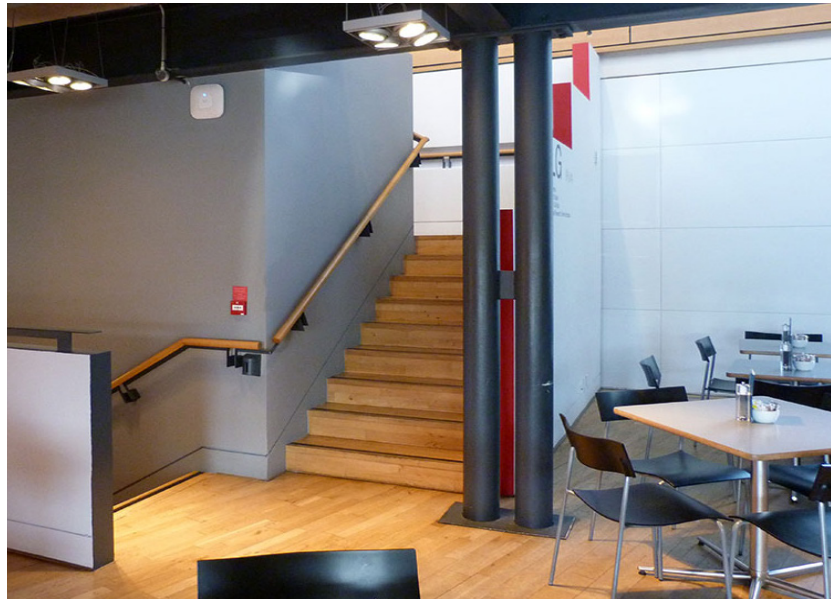
Inside the Print Studio there is a gender neutral accessible toilet. This is for those using the Print Studio or undertaking workshops and classes in this space.

Free period products are available in this toilet.



STAIRS

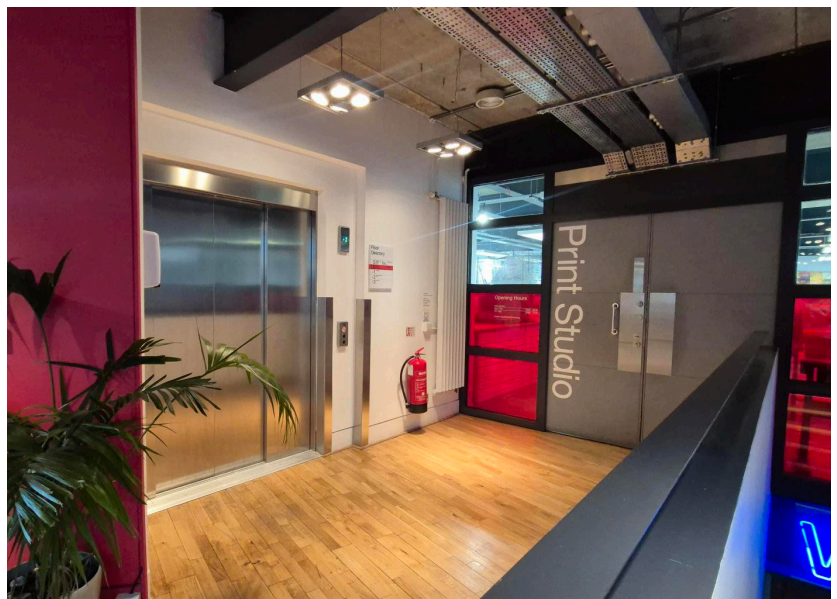
There are stairs leading down to -1 located outside the Print Studio and also stairs leading up to the ground floor.



LIFT

Our passenger lift is currently closed for maintenance. Please use the service lift located outside DCA Print Studio.

This can take you to the other floors of the building (excluding floor 1) or out to the car park at the back of the building on -2.



FLOOR 1

There is a meeting room located on floor 1.

Our passenger lift is currently closed for maintenance so there is no lift access to this floor. Please use the stairs between the galleries.



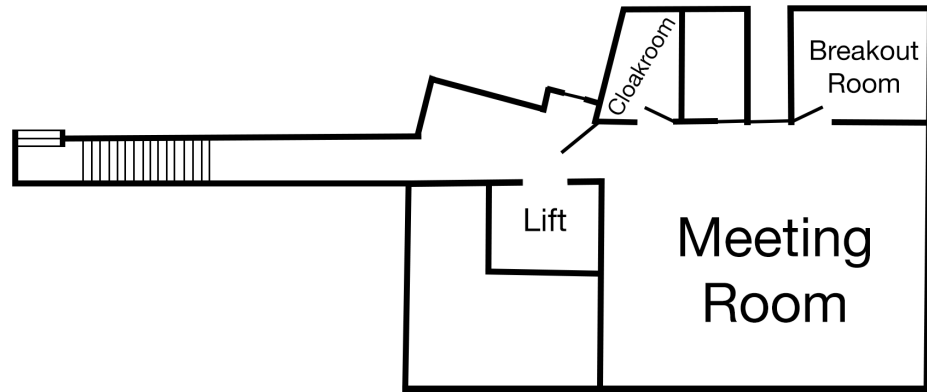
FLOORS -1, -2 AND -3

These floors are currently used for events and workshops. If you are attending any of these, a member of staff can show you where to go.

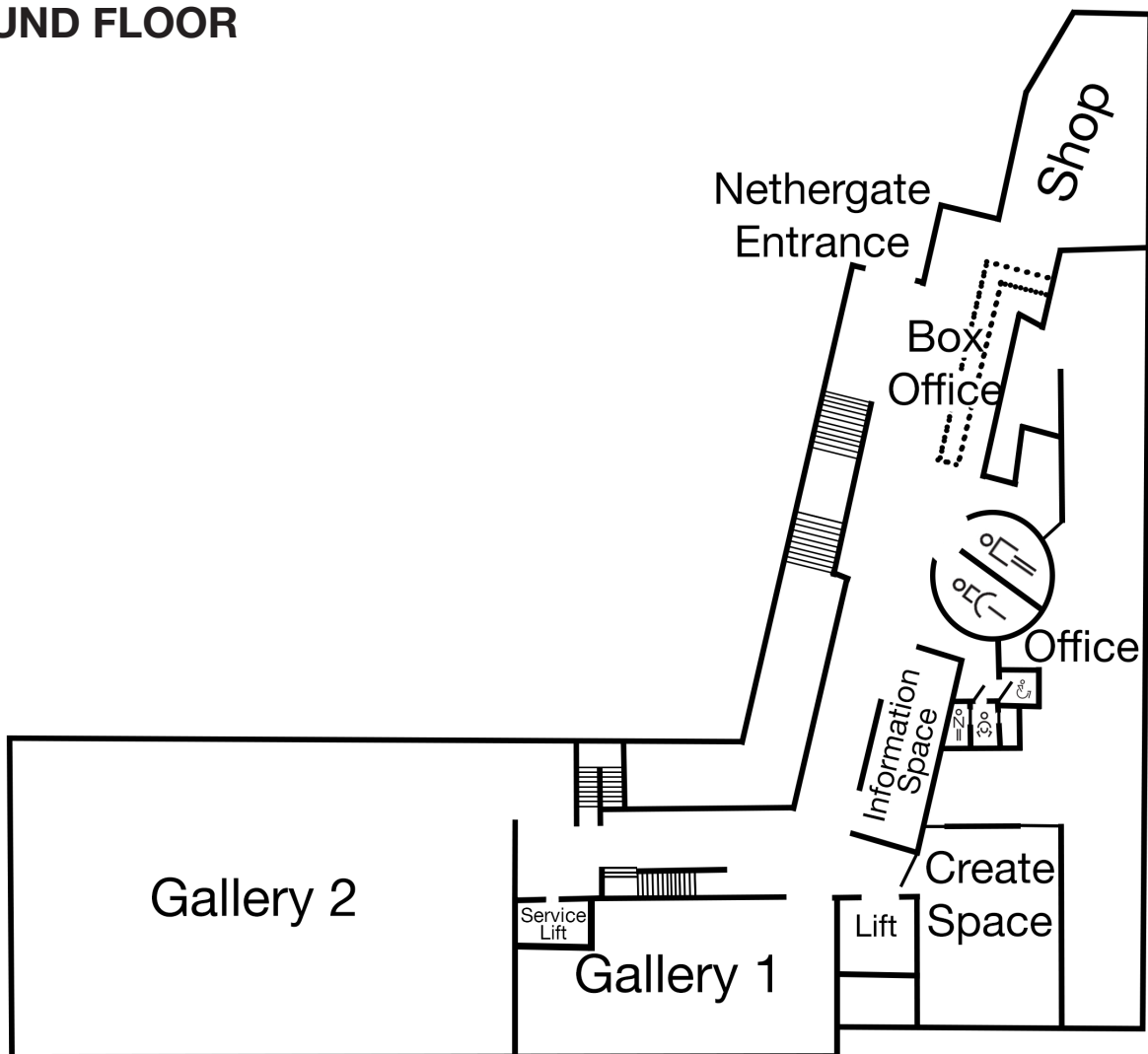


FLOOR PLAN

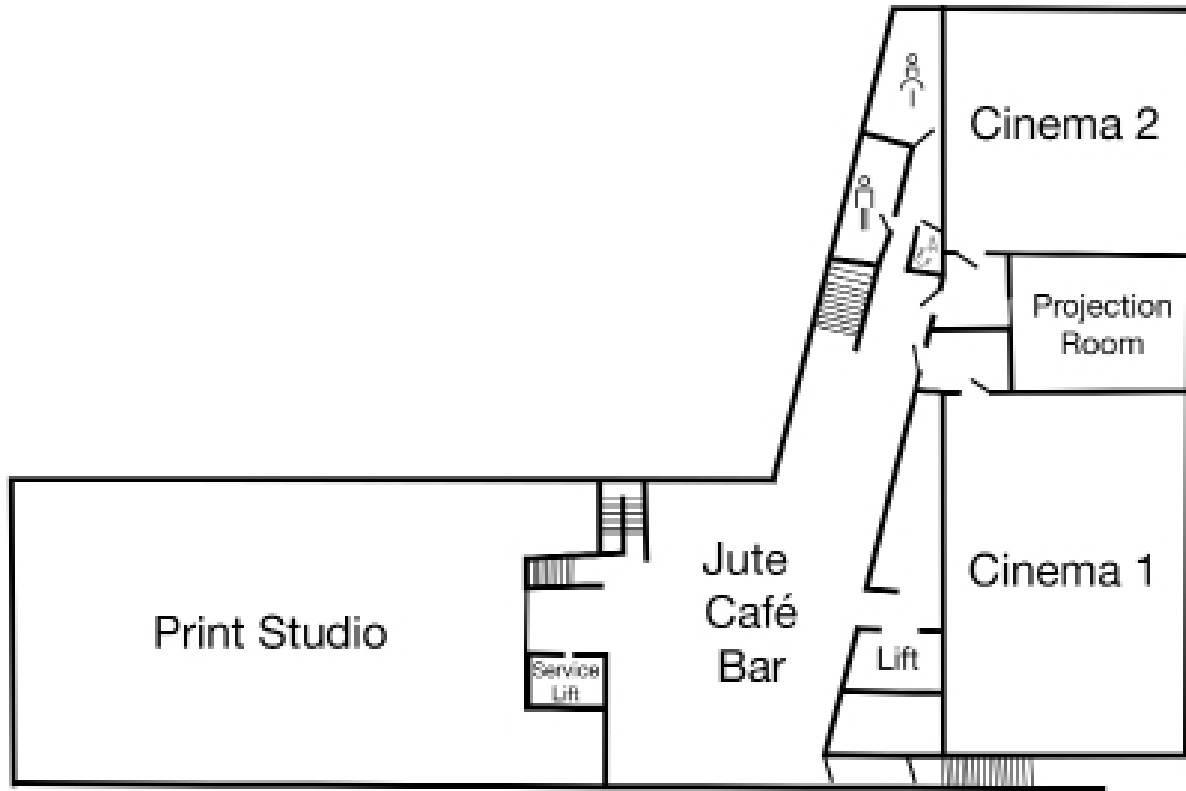
FLOOR 1



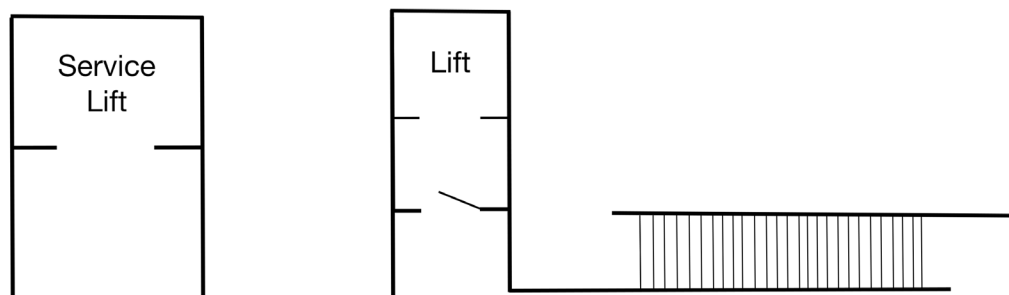
GROUND FLOOR



LOWER GROUND FLOOR



FLOOR -2



Car parks